

Using LCD Projectors

InFocus IN104



Online Handouts

<http://webclass.org>

Webclass
web-based tutorials

Google™ Custom Search Search

Education and training via the internet are growing rapidly. Accessibility from home or school makes Internet handouts a viable alternative to hardcopy handouts. The PDF format is accessible on both Windows and MAC platforms using [Adobe Reader](#), or the fast and simple open-source reader for Windows called [Sumatra](#).

Webclass.org provides:

- Workshop handouts available anytime, anywhere
- Web-based [Keyboarding](#) requiring no login
- Perpetual lesson plan [calendar](#)

After all, **Webclass.org** can be *anywhere you want it to be....*

Elementary Storytelling in iTunes

SD teachers and students

es how video and audio tools are
ory. Curriculum topics chosen by the
os to the reenactment of historical or

entire class, while others use a
nts. Video length is generally 2 to

**LCD Projectors
InFocus IN104**

About Us
Atomic Learning
Desktop Setup
EasyTech
Elementary Storytelling
Audacity
Copyright Infringement
Creating a Digital Story
Digital Cameras
EPISD Photo Release
iPod – Getting Started
Podcast Projects
Sample Movie Maker files
Syncing video iPod
Using iTunes
Windows Movie Maker
MOV-WMV converter
MP4-AVI converter
WMV-MP4 converter
ePALS Student Email
Excel 2007
Keyboarding
LCD Projectors
InFocus IN104
Optima TX-542
Mapping Network Printers
Outlook Live
Student Quick Reference
Teacher Quick Reference

Objectives

- **Laptop setup**

1. Connect laptop to projector
2. Display settings

- **Projector setup**

1. Video and audio input
2. Display menu
3. Picture menu
4. System setup menu
5. Shut down

Using LCD Projectors

**HP 6450 Laptop
Setup**

Laptop Projector Port



HP 6450b rear view

1. RJ-45 network cable for Internet
2. External VGA monitor – projector port
3. Power connector

Connect Projector

From
LCD
projector



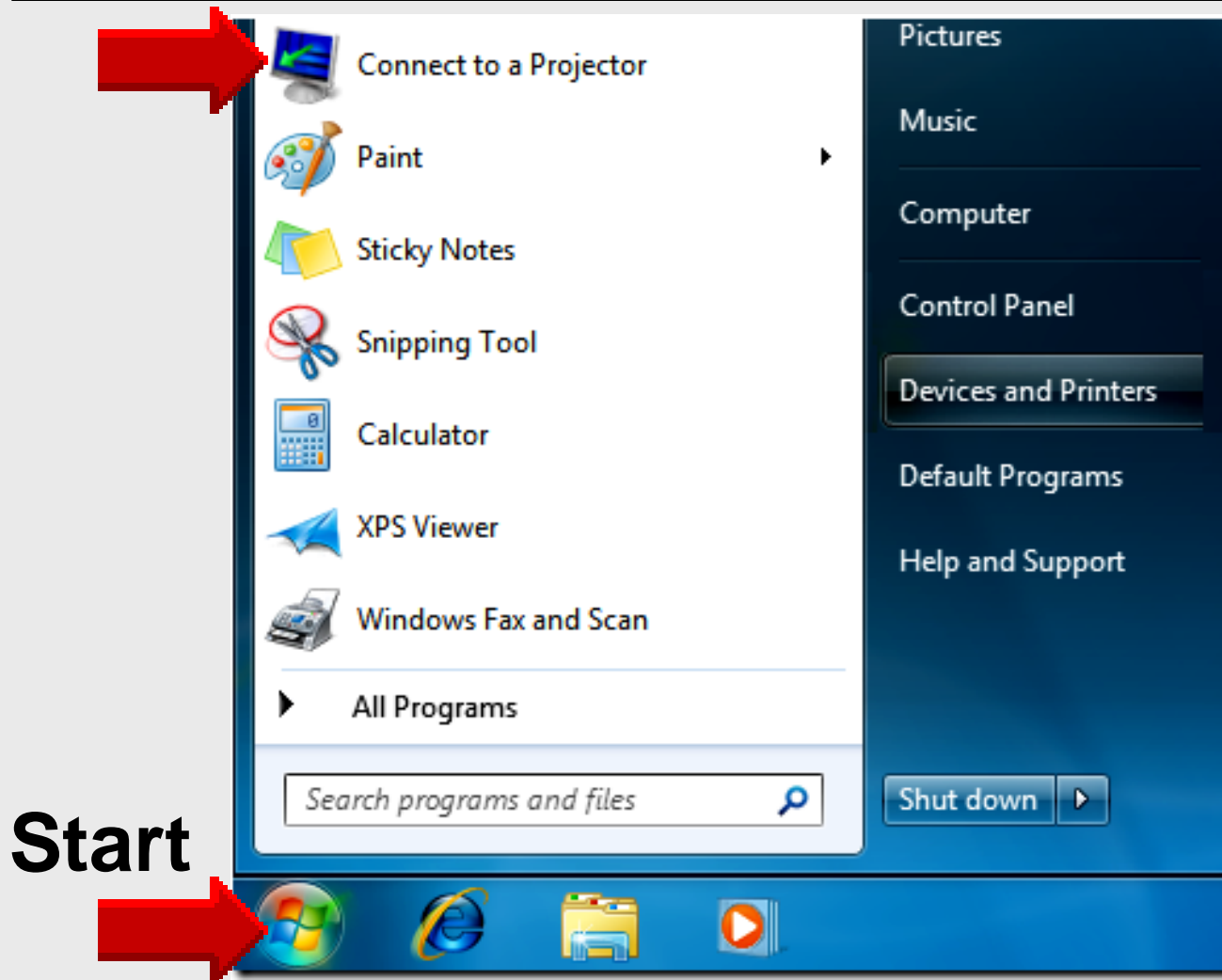
**Laptop
VGA port**
3 rows
5 pins per row

Connect *to* Projector

Press **Function + F4**

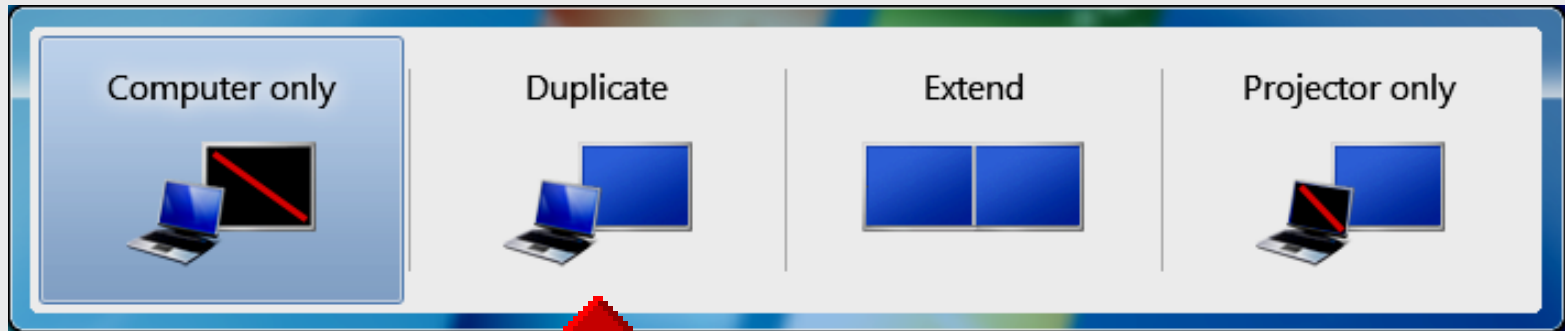
1. Laptop monitor only
2. Projector screen only
3. Monitor + projector screen

Connect *to* Projector



Start

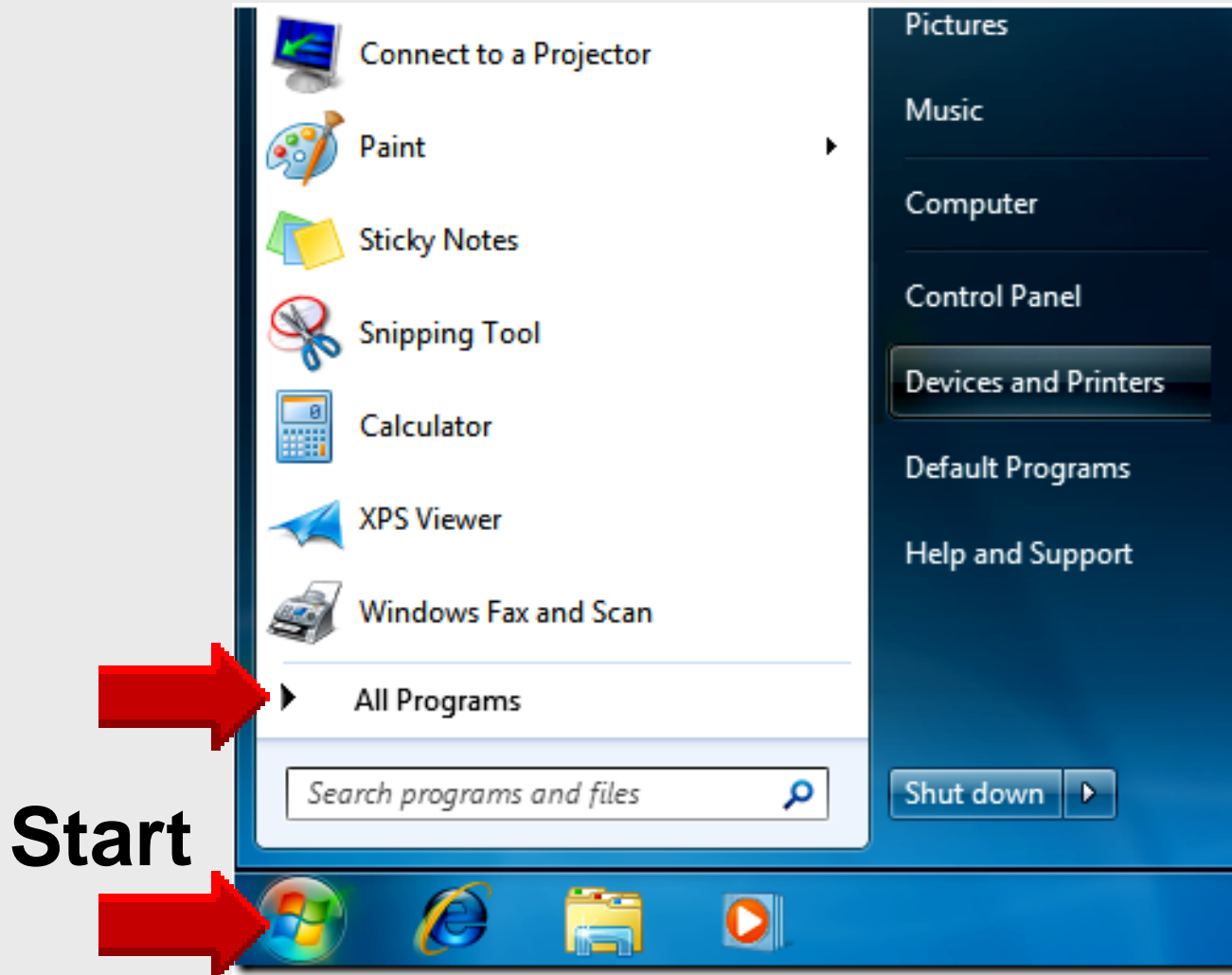
Connect *to* Projector



Menu also obtained by

- Pressing Function + F4
-  key + P

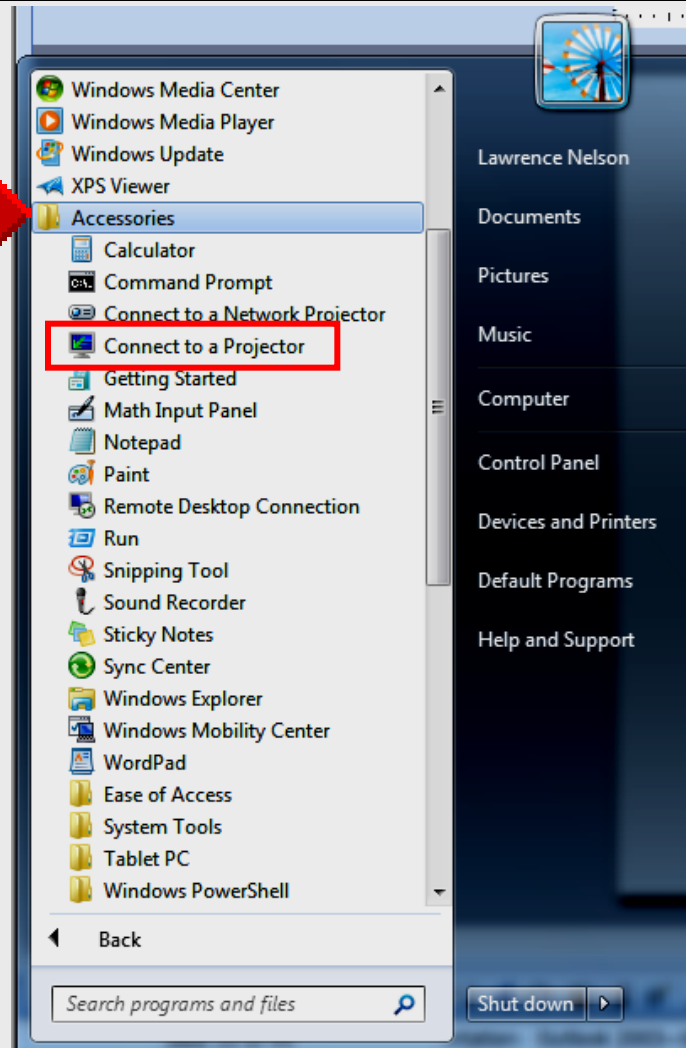
Find Connect *to* Projector



Find *Connect to* Projector

Left click
Accessories

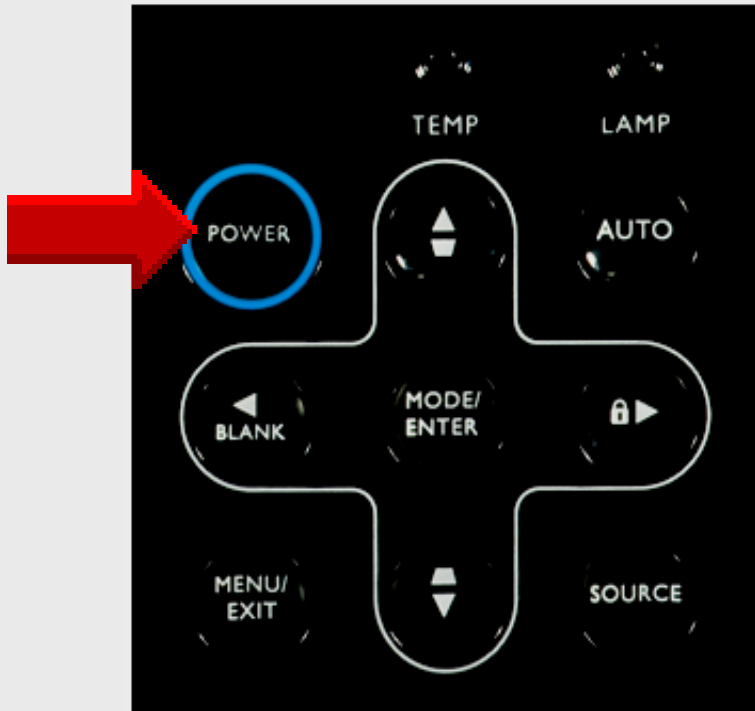
Right-click
To pin to
Start Menu



Using LCD Projectors

**InFocus IN104
Setup**

Power Up



POWER: Use this button to soft-power up or power down the projector. *Note:* It can take a minute for the image to achieve full brightness.

Indicator Patterns -

Solid Amber: Press the power button to start the projector.

Blinking Green: The power button has been pressed and the software is initializing.

Solid Green: The projector and lamp is on and initialized.

Blinking Amber: The projector has been turned off or has shutdown automatically. The fans will continue to run until the lamp has been cooled sufficiently (approximately 90-seconds). If the projector continues to shut-down automatically, contact InFocus Technical Support or your local dealer.

Monitor Video Input



Video from laptop or
desktop computer

Display Default



SVGA
800 x 600 PIXELS

XGA
1,024 x 768 PIXELS

Control Panel

Adjust your computer's settings

View by: **Large icons** ▾



Action Center



Administrative Tools



Adobe Gamma



AutoPlay



Backup and Restore



Color Management



Credential Manager



Date and Time



Default Programs



Desktop Gadgets



Device Manager



Devices and Printers



Display



Ease of Access Center



Folder Options



Fonts



Getting Started



HomeGroup



HP 3D DriveGuard



HP Power Assistant



HP Wireless Assistant



IDT Audio Control Panel



Indexing Options




Intel(R) Graphics and Media

Change Display Settings

Control Panel Home

Adjust resolution

Adjust brightness

 Calibrate color

Change display settings

Connect to a projector

Adjust ClearType text

Set custom text size (DPI)



Make it easier to read what's on your screen

You can change the size of text and other items on your screen by choosing one of these options. To temporarily enlarge just part of the screen, use the [Magnifier](#) tool.

Smaller - 100% (default) Preview _____

Medium - 125%



Change Display Settings

Change the appearance of your display



Display:

1. Mobile PC Display ▾

Resolution:

1366 × 768 (recommended) ▾


OR

1024 × 768 ▾

Orientation:

Landscape ▾

[Advanced settings](#)

[Connect to a projector](#) (or press the  key and tap P)

[Make text and other items larger or smaller](#)

[What display settings should I choose?](#)

OK

Cancel

Apply

Composite Video Input



Video from DVD player
S-video is better quality

Audio Input



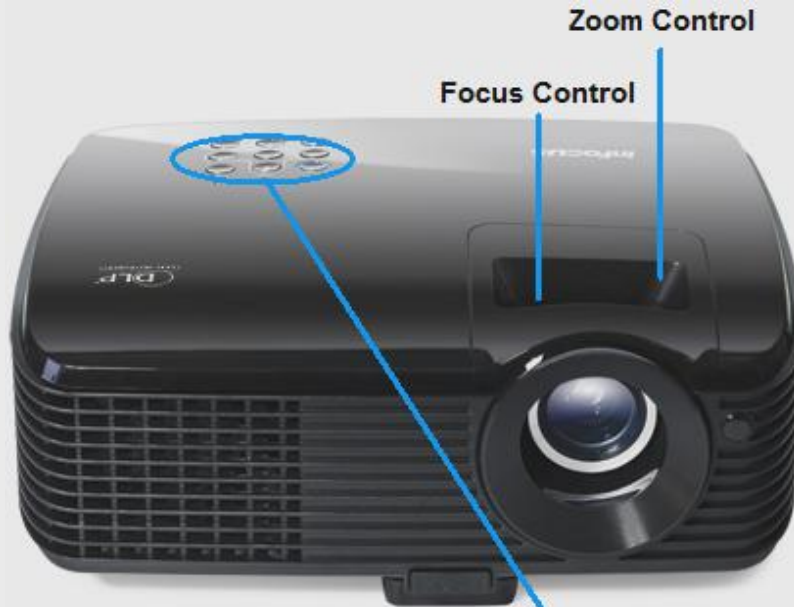
Use the built-in speakers

Audio Input



3.5mm stereo cable
from laptop headphone
to InFocus audio in

Initial Setup



1. Adjust **focus**
2. Adjust **zoom**
3. Adjust **keystone**



Keystone
adjust

Menu Button



Display Menu



Picture Menu



Source Menu



System Setup Menu

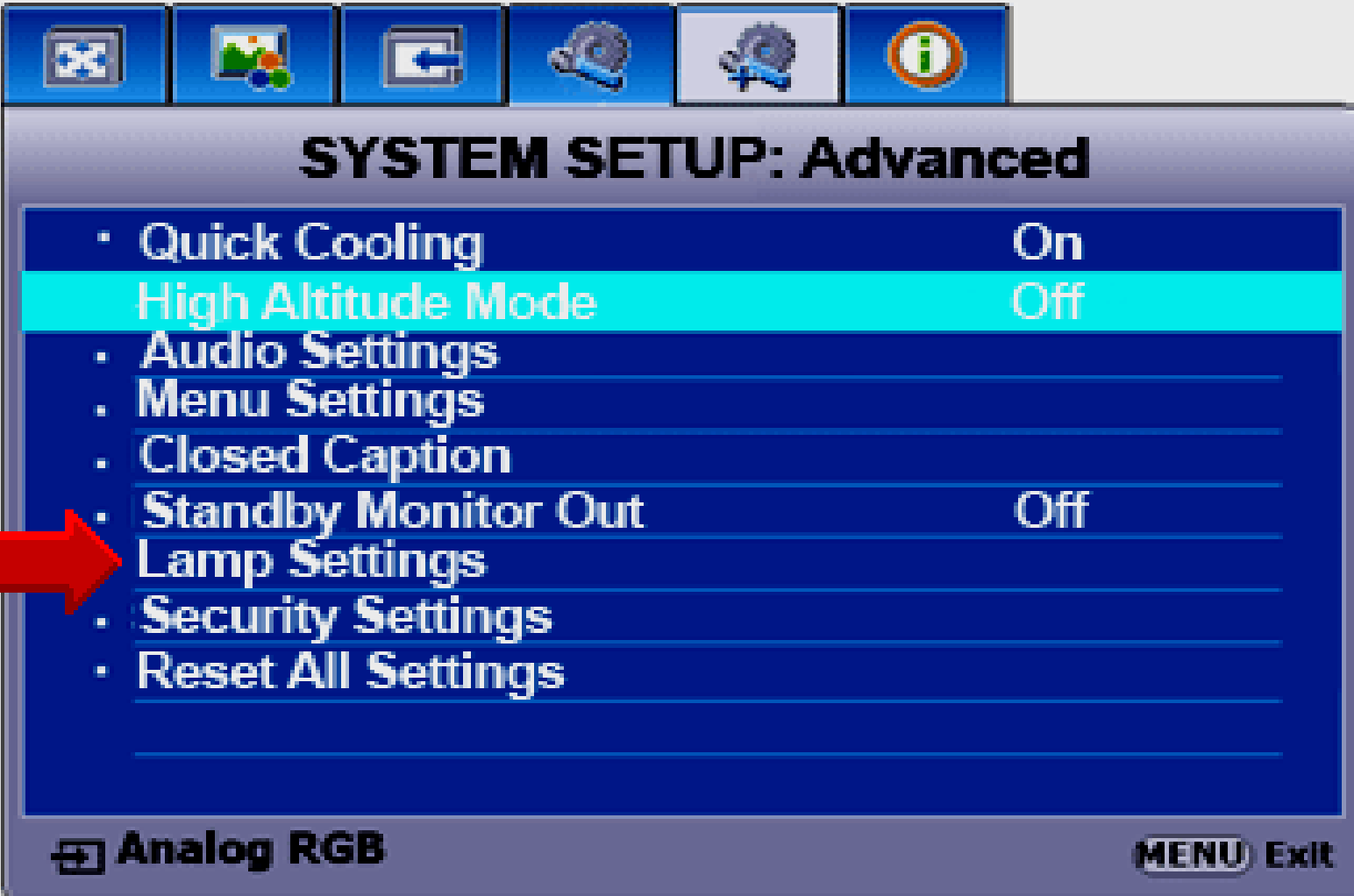


The image shows a 'SYSTEM SETUP: Basic' menu with several settings. A red arrow points to the 'Panel Key Lock' setting.

| Setting | Value |
|----------------------|-------------|
| · Presentation Timer | |
| Language | English |
| · Projector Position | Front Table |
| · Auto Power Off | Disable |
| · Blank Timer | Disable |
| · Panel Key Lock | Off |
| · Timer Controller | Disable |
| · Splash Screen | InFocus |

At the bottom left, there is a button labeled 'Analog RGB' with a plus sign icon. At the bottom right, there is a button labeled 'MENU Exit'.

System Setup Menu

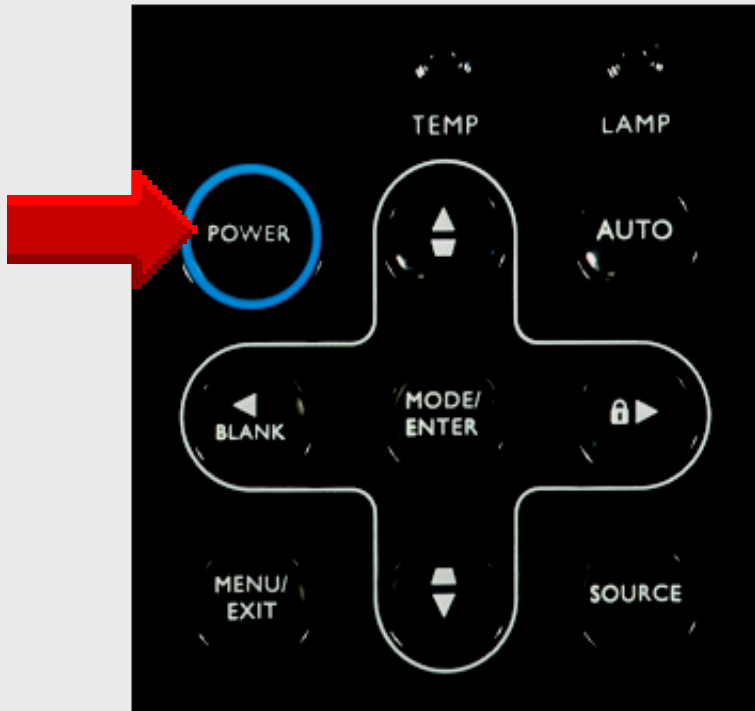


The image shows a television's system setup menu. At the top, there are six icons in a row: a network icon, a landscape icon, a home icon, a gear icon, a gear icon with a plus sign, and an information icon. Below these icons is the title "SYSTEM SETUP: Advanced". The main menu consists of several options, each with a small dot on the left and a status indicator on the right. The options are: "Quick Cooling" (On), "High Altitude Mode" (Off), "Audio Settings", "Menu Settings", "Closed Caption", "Standby Monitor Out" (Off), "Lamp Settings", "Security Settings", and "Reset All Settings". A red arrow points to the "Lamp Settings" option. At the bottom left, there is a button labeled "Analog RGB" with a small icon. At the bottom right, there is a button labeled "MENU Exit" with a small icon.

| Option | Status |
|-----------------------|--------|
| • Quick Cooling | On |
| • High Altitude Mode | Off |
| • Audio Settings | |
| • Menu Settings | |
| • Closed Caption | |
| • Standby Monitor Out | Off |
| • Lamp Settings | |
| • Security Settings | |
| • Reset All Settings | |

Analog RGB **MENU Exit**

Power Down



POWER: Use this button to soft-power up or power down the projector. *Note:* It can take a minute for the image to achieve full brightness.

Indicator Patterns -

Solid Amber: Press the power button to start the projector.

Blinking Green: The power button has been pressed and the software is initializing.

Solid Green: The projector and lamp is on and initialized.

Blinking Amber: The projector has been turned off or has shutdown automatically. The fans will continue to run until the lamp has been cooled sufficiently (approximately 90-seconds). If the projector continues to shut-down automatically, contact InFocus Technical Support or your local dealer.

Online Handouts

<http://webclass.org>

Webclass
web-based tutorials

Google™ Custom Search Search

Education and training via the internet are growing rapidly. Accessibility from home or school makes Internet handouts a viable alternative to hardcopy handouts. The PDF format is accessible on both Windows and MAC platforms using [Adobe Reader](#), or the fast and simple open-source reader for Windows called [Sumatra](#).

Webclass.org provides:

- Workshop handouts available anytime, anywhere
- Web-based [Keyboarding](#) requiring no login
- Perpetual lesson plan [calendar](#)

After all, **Webclass.org** can be *anywhere you want it to be....*

Elementary Storytelling in iTunes
SD teachers and students

es how video and audio tools are
ory. Curriculum topics chosen by the
os to the reenactment of historical or

entire class, while others use a
nts. Video length is generally 2 to

**LCD Projectors
InFocus IN104**

About Us
Atomic Learning
Desktop Setup
EasyTech
Elementary Storytelling
Audacity
Copyright Infringement
Creating a Digital Story
Digital Cameras
EPISD Photo Release
iPod – Getting Started
Podcast Projects
Sample Movie Maker files
Syncing video iPod
Using iTunes
Windows Movie Maker
MOV-WMV converter
MP4-AVI converter
WMV-MP4 converter
ePALS Student Email
Excel 2007
Keyboarding
LCD Projectors
InFocus IN104
Optima TX-542
Mapping Network Printers
Outlook Live
Student Quick Reference
Teacher Quick Reference